

IRSAP

creating your comfort

IRSAP SPA
 45031 Arquà Polesine (RO) Italy
 Tel. +39 0425 466611 - Fax +39 0425 466662
 Website: www.irsap.com
 E-mail: info@irsap.it

IR GROUP SARL
 19, Chemin de la Plaine 69390 Vourles (France)
 Tel. +33 04 28 00 01 67 - Fax +33 04 72 31 86 40
 Web: www.irsap.com;
 E-mail: irsaphross@irgroup.fr

IRSAP IBERICA S.L.
 Oficina y Almacén: P.I.CAMI RAL
 Leonardo da Vinci, 4 08850 Gavà (Barcelona)
 Tel. 93 633 47 00 - Fax 93 633 47 04
 E-mail: informacion@irsap.com
 Web: www.irsap.com

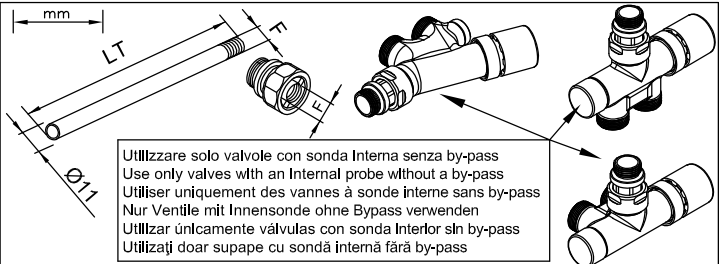
IRROM Industrie S.R.L.
 Str. Principală 1/A, Sat Fundătara, Iclod 407336,
 jud. Cluj, România
 Tel: +40 (0)264 263400 - Fax: +40 (0)264 263404
 Web: www.irsap.ro

cod.394M0819

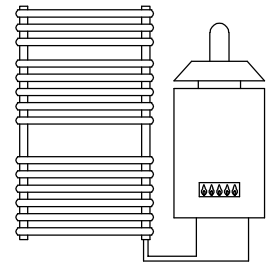
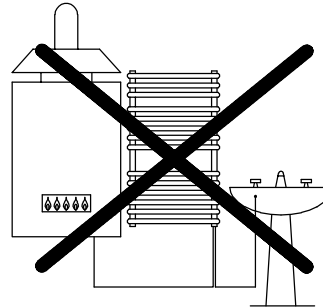
Istruzioni di montaggio ed uso
 Operation instructions
 Instructions de montage et usage
 Montage- und Bedienungsanleitung
 Instrucciones de montaje y uso
 instrucțiuni pentru montare și utilizare

IRSAP

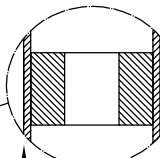
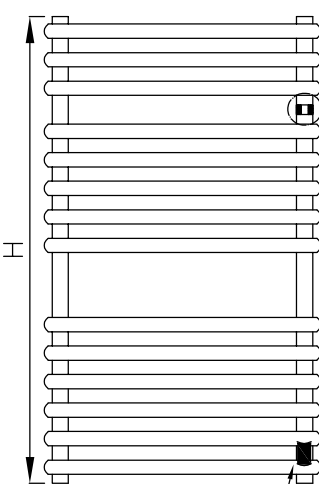
creating your comfort



Accessori non inclusi , Accessories not included , Accessoires non compris , Zubehör nicht inklusive , Accesorios no incluidos , Accesorii neincluse



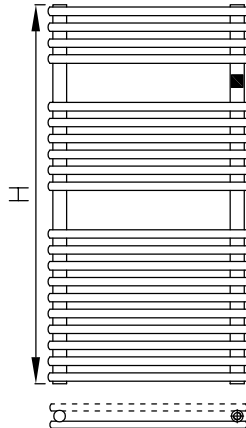
OK



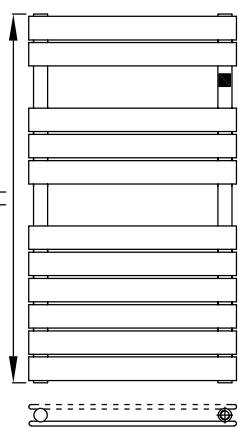
Diaframma
 Baffle
 Diaphragme
 Stauscheibe
 Diafragma
 Diafragmă

INGRESSO ACQUA
 WATER INLET
 ENTRÉE DE L'EAU
 WASSEREINLAUF
 ENTRADA AGUA
 INTRARE APA

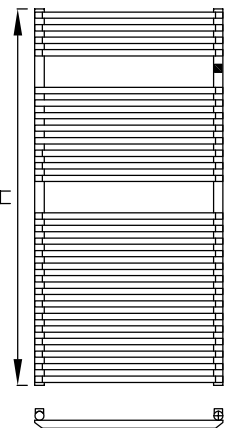
H	LT	H	LT
mm	mm	mm	mm
810	695	725	595
1218	900	1112	950
1558	900	1456	950
1762	900	1757	950



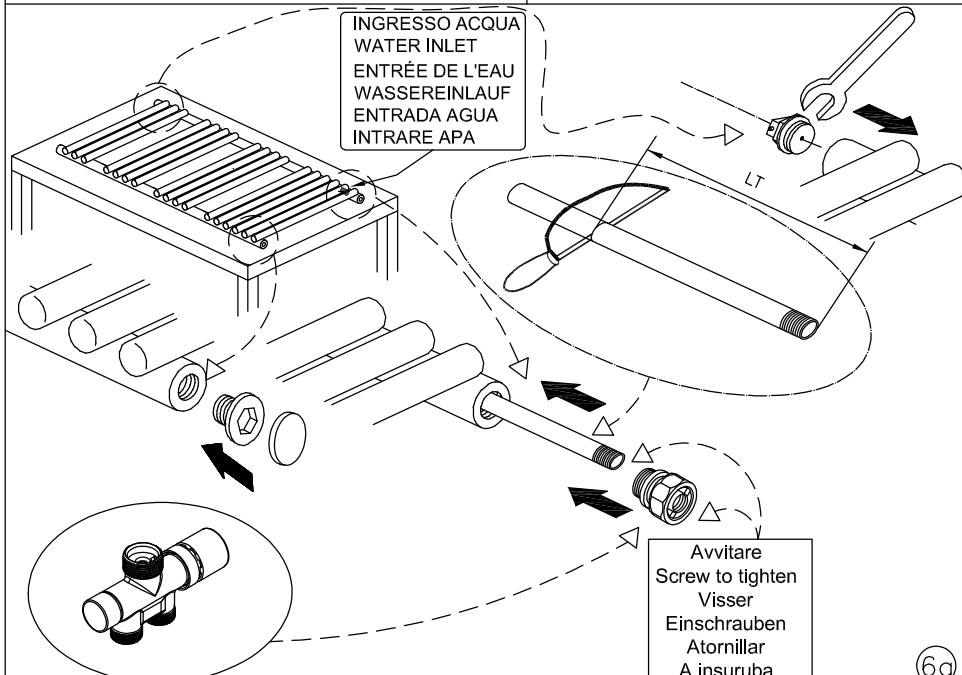
H	LT	H	LT
mm	mm	mm	mm
373	290	543	450
985	900		



H	LT	H	LT
mm	mm	mm	mm
792	695	1156	900
1520	900	1744	900

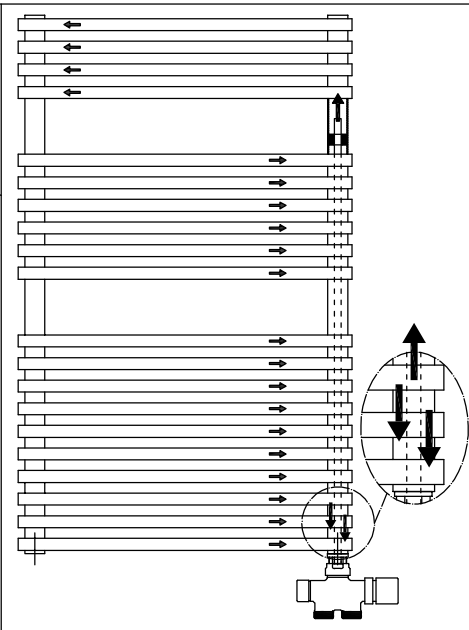


H	LT	H	LT
mm	mm	mm	mm
800	650	1200	1050
1440	1130	1760	1530



INGRESSO ACQUA
 WATER INLET
 ENTRÉE DE L'EAU
 WASSEREINLAUF
 ENTRADA AGUA
 INTRARE APA

Avvitare
 Screw to tighten
 Visser
 Einschrauben
 Atornillar
 A insuruba



4a

5a

6a

7a

